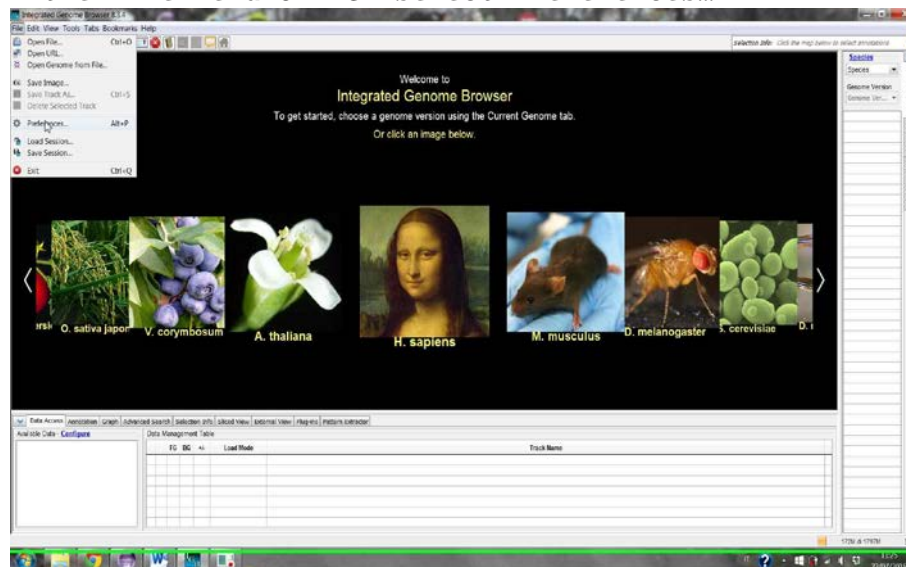
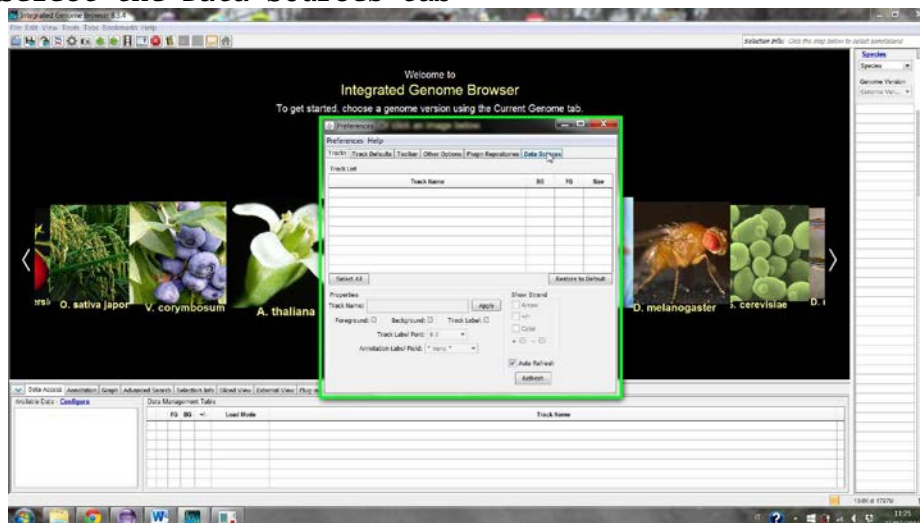


Instructions to configure IGB and run SimilaritySearch desktop application

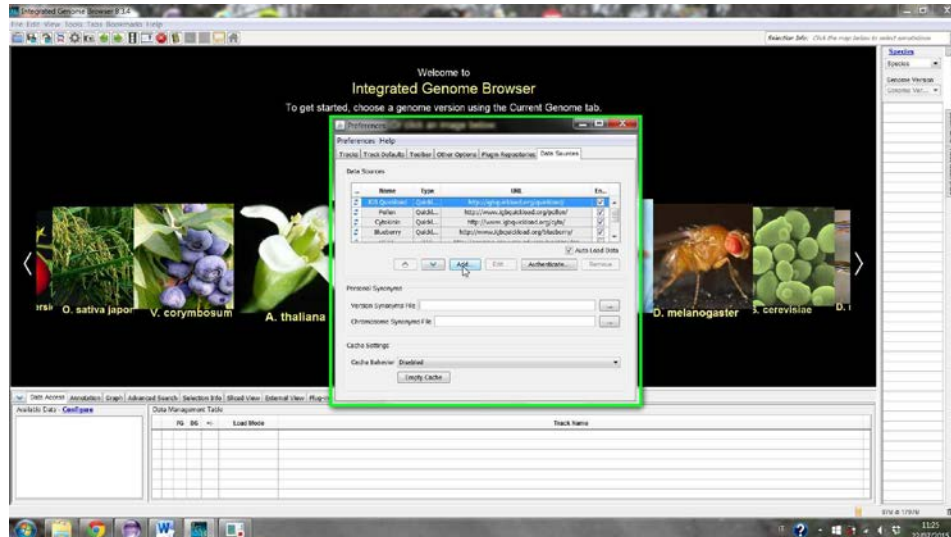
1. Extract all the content of the archive SimilaritySearch.
2. In case you downloaded the basic version of the app, please add an executable jar file (*igb_exe.jar*) of IGB in the folder *<archive path>/SimSearch*.
3. Launch *igb_exe.jar* file contained in the *<archive path>/SimSearch* folder
4. If you decided to use the quickload repository to improve the performances, configure the quickload option of IGB to point to *<archive path>/igb/quickload* folder (it is really convenient to reduce the time to start the application):
 - In the File menu of IGB select Preferences...



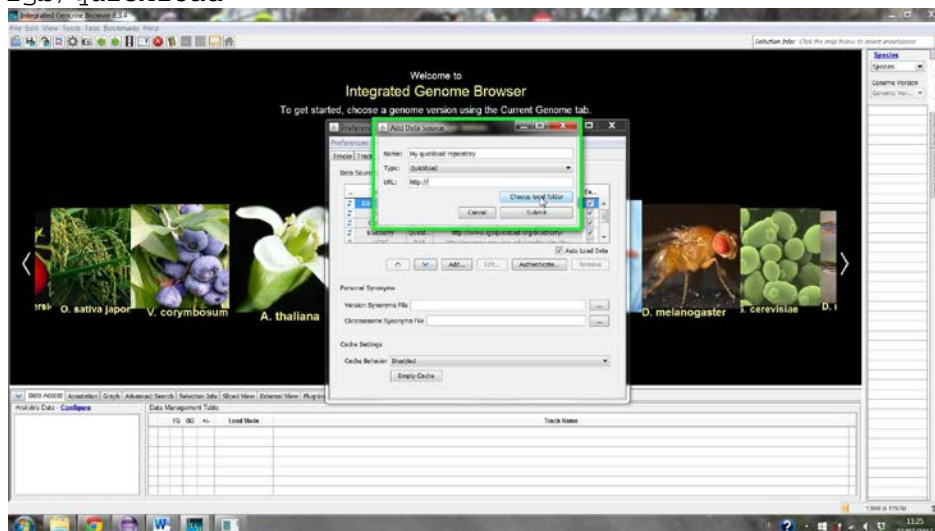
- Select the Data Sources tab



- Click the Add... button

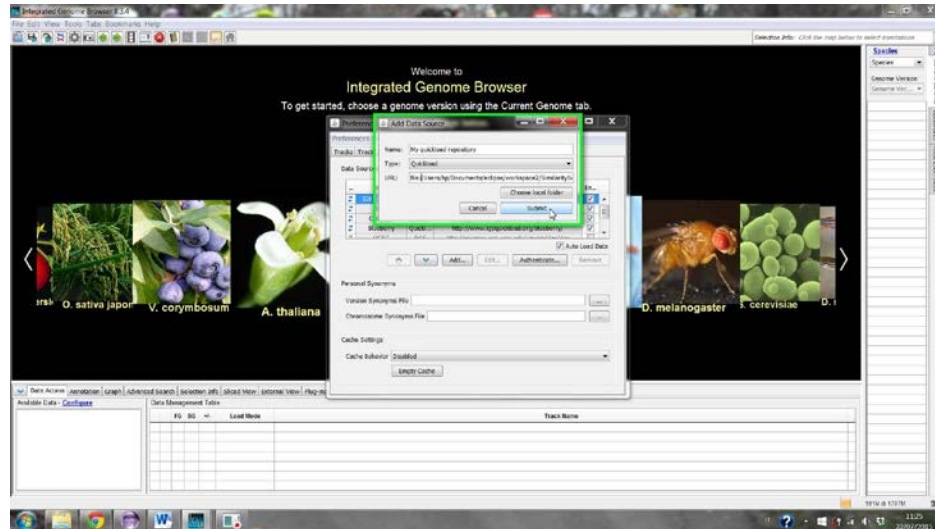


- Enter a name for your quickload repository (e.g., My Quickload)
- Select the type: quickload
- Press the Chose local folder button and select as folder igb/quickload

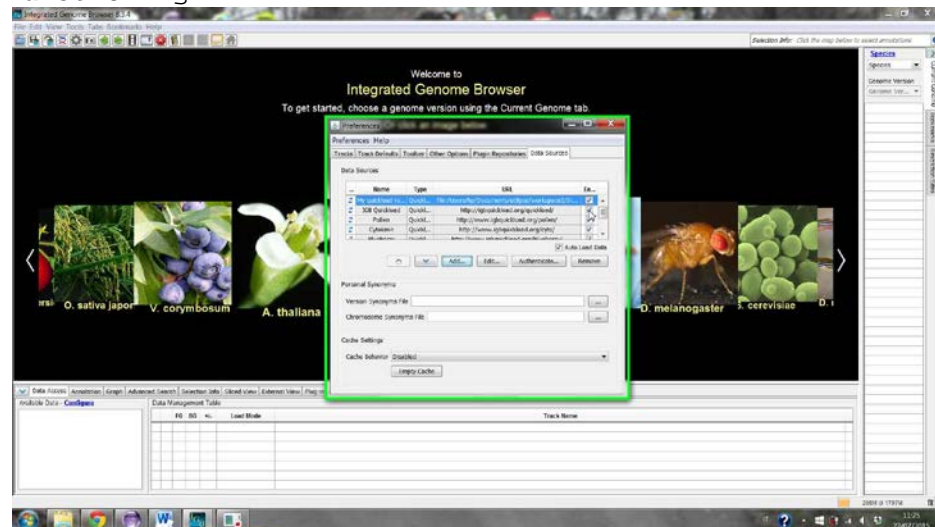


- Warning: before pressing Submit, check the URL of the repository. It must NOT contain C:/ (i.e., it must look like *file://<archive path>/igb/quickload*)

- Press the Submit button

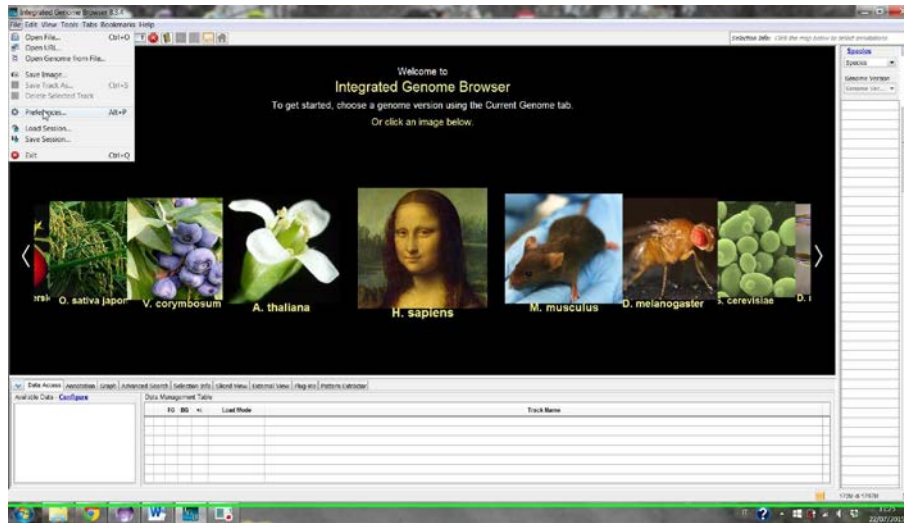


- Disable the IGB Quickload repository to avoid an unexpected functioning

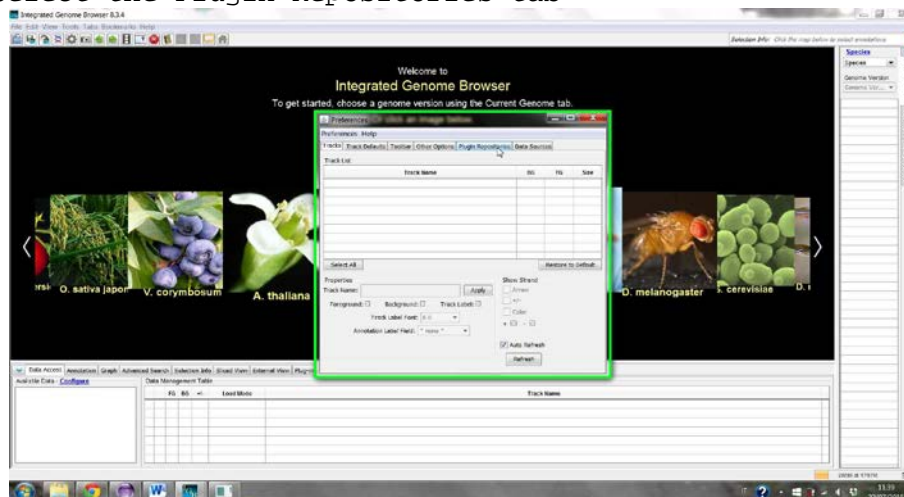


5. Configure the plugin repository (needed to use the functionality that allows users to extract a pattern directly from IGB):

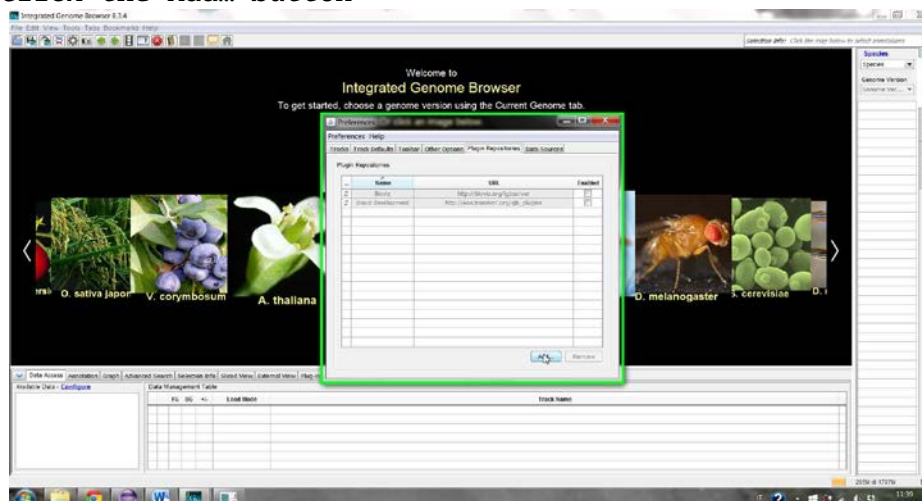
- In the File menu of IGB select Preferences...



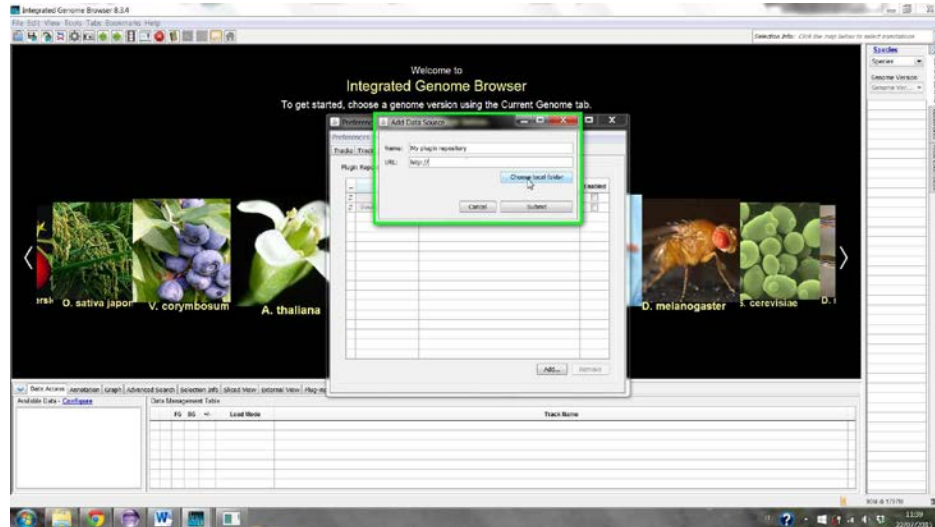
- Select the Plugin Repositories tab



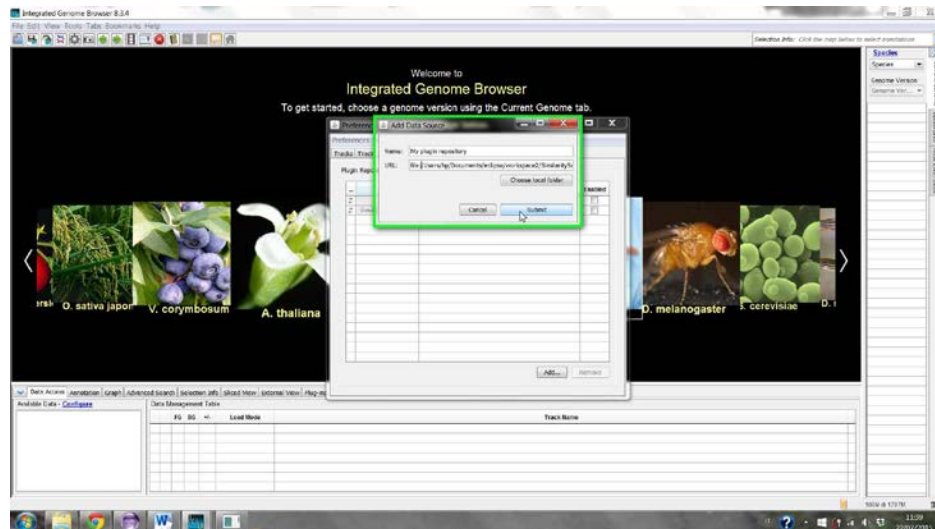
- Click the Add... button



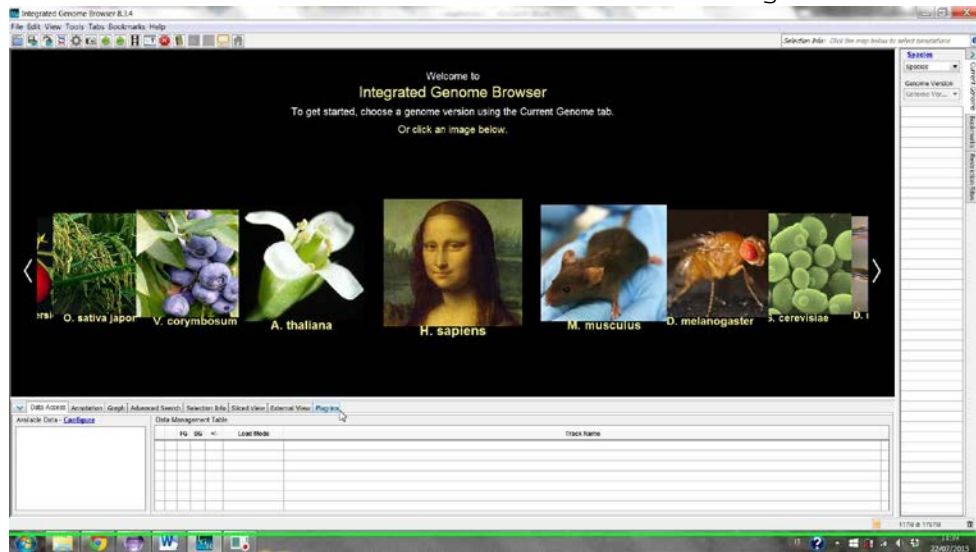
- Enter a name for your plugin repository (e.g., My Plugin Repository)
- Press the Chose local folder button and select as folder igb/plugins



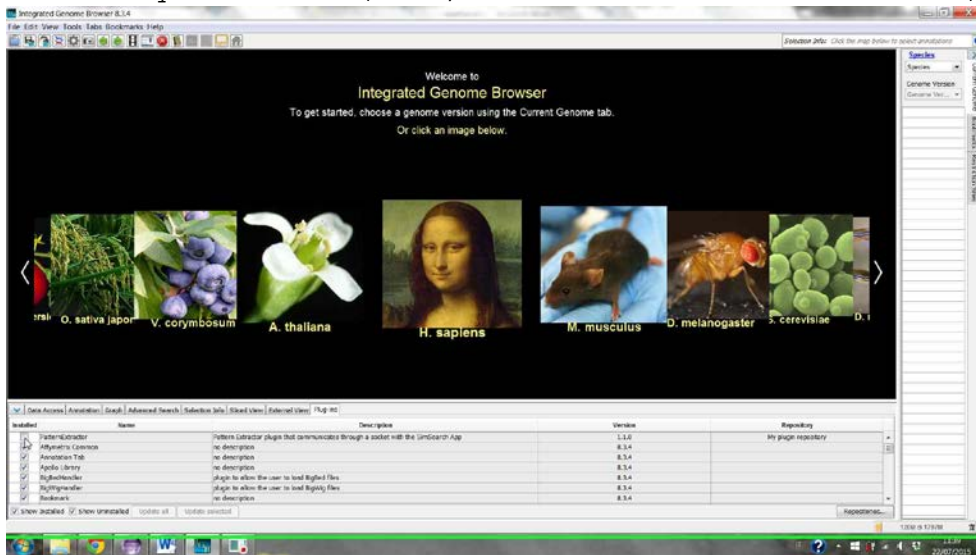
- Warning: before pressing Submit, check the URL of the repository. It must NOT contain C:/ (i.e., it must look like *file://<archive path>/igb/plugins*)
- Press the submit button



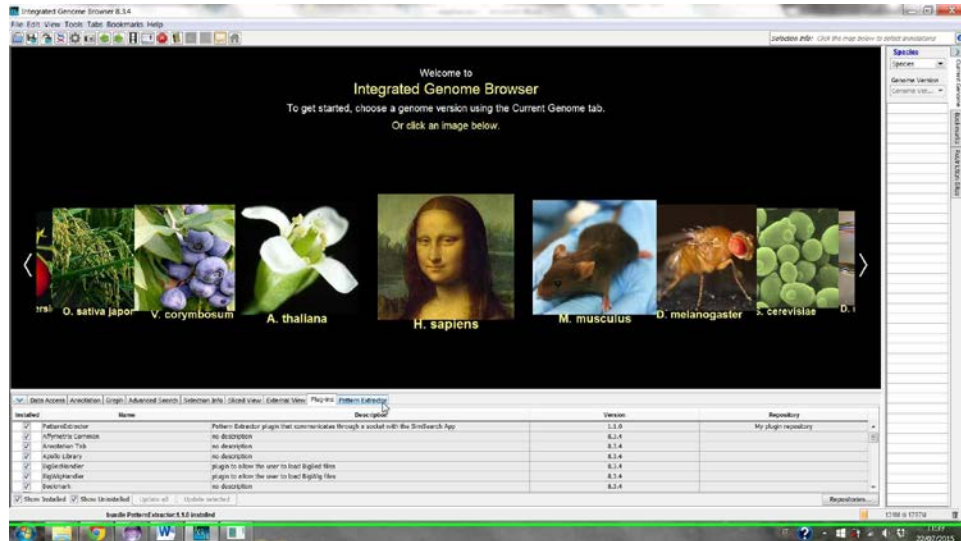
- In the bottom tab menu of IGB select the Plug-ins tab



- You should see a plugin called PatternExtractor, control that it is correctly installed (i.e., the checkbox must be selected)



- In the same bottom tab menu of IGB you should now see the Pattern Extractor tab



6. Run the SimilaritySearch.jar file, contained in the <archive path>/SimSearch folder, to start using our application.